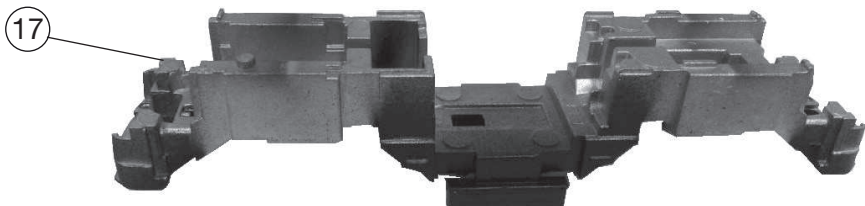
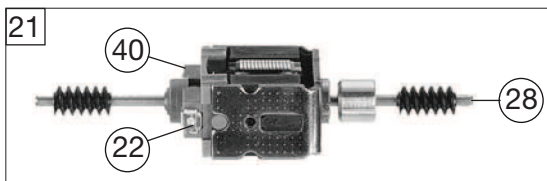
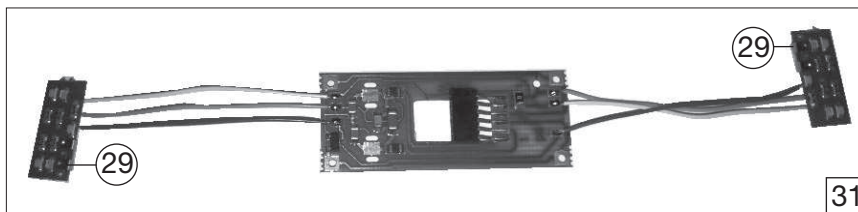
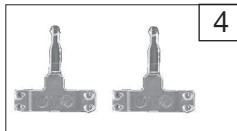
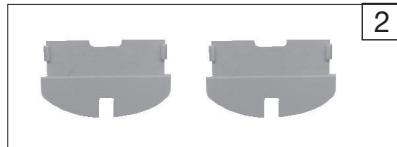
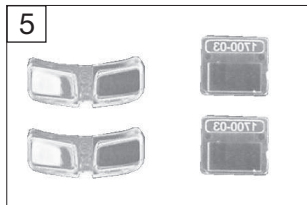
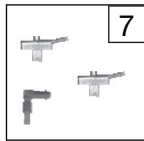
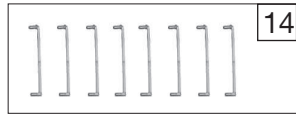
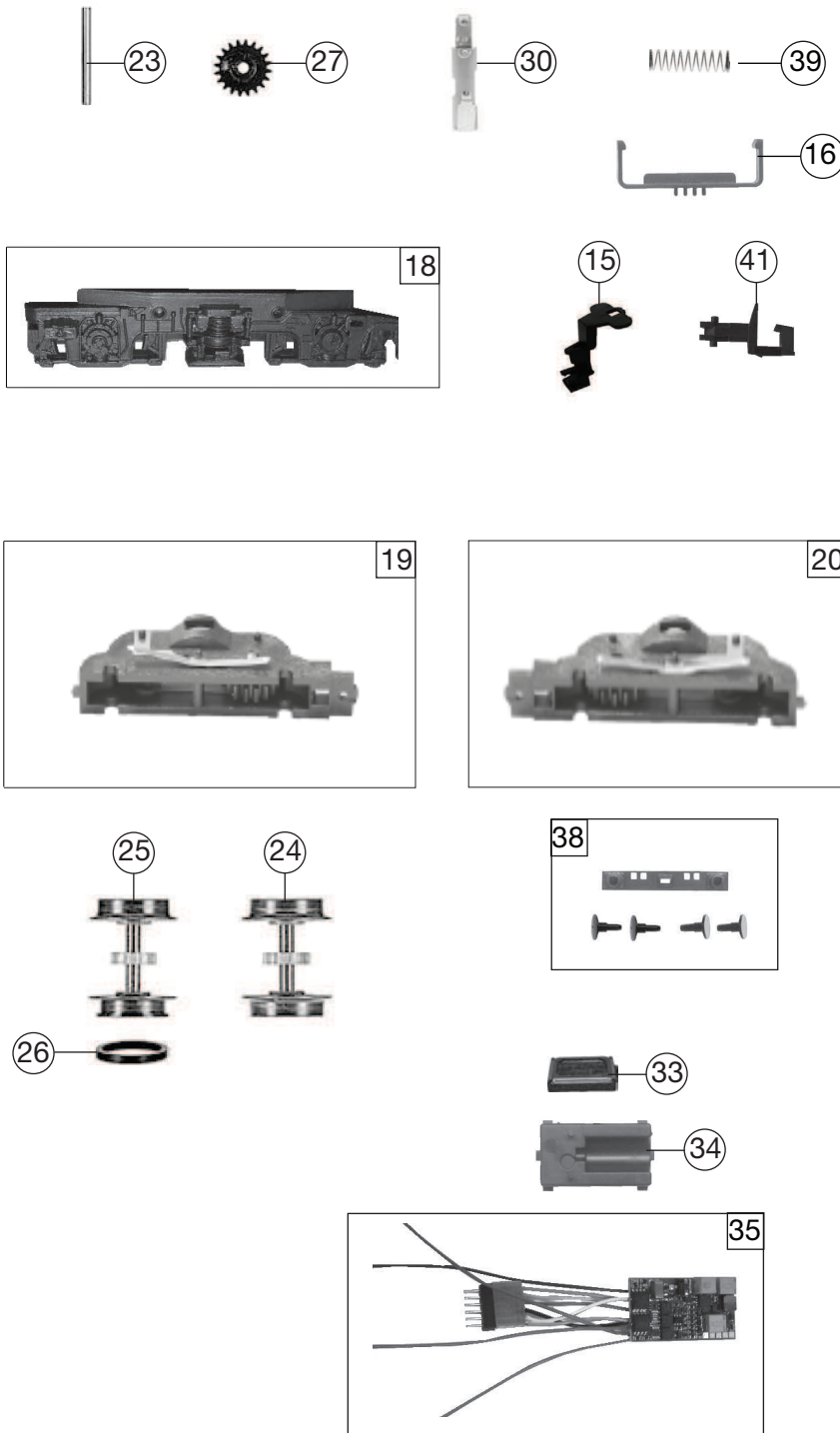


ohne Stromabnehmer
w/o Pantograph



733673 BR 139 Lokomotion **N**

Pos. Nr. Pos.no.	Beschreibung Description	Art.-Nr. Art.no.	Preisgruppe Price bracket
1	LOKGEHÄUS. KPL. O. PANTOGR. 733603 Body assembly complete w/o pantograph	10733603	038
2	LICHTABDECKUNG -SATZ Light cover - set	12733001	011
3	LICHTMASKE Light mask	12733803	006
4	LICHTLEITER/SATZ Light conductor set	13733101	003
5	FENSTER -SATZ f.733603 Window set	15733603	013
6	TRAVERSE F. SCHERENSTROMABNEHM Traverse for double arm pantograph	17733603	006
7	SCHALTER -SATZ Switch set	18733603	006
8	ZUGHAKEN -BREMSKUPPLUNG -SATZ Coupling hook,break coupling set	19733001	012
9	PFEIFE Whistle	00197604	003
10	ANTENNE LANG Antenn long	00197802	002
11	ZUGHEIZKABEL Train heating cable	19793200	005
12	WISCHER -SATZ Set of wipers	19793300	013
13	TRITT - SATZ Treadle set	19793400	005
14	GRIFFSTANGEN -SATZ Hand-rail -set	19794500	008
15	KUKU -DEICHSEL Short coupling reception	38702700	007
16	HALTEBÜGEL FÜR KUPPLUNG Coupling support	38902000	007
17	LOKFAHRGESTELL OHNE MOTOR Loco chassis w/o moto	40733001	018
18	DREHGESTELLRAHMEN Bogie framework	41733603	011
19	DREHGESTELLBLOCK KPL.VORNE M.S Bogie block complete,front	45733001	017
20	DREHGESTELLBLOCK KPL.HINTEN M. Bogie block complete,rear	46733001	017
21	MOTOR Motor	50733002	028
22	KOHLLENHALTER Brush holder	00507801	001
23	ACHSE Z. DG-BEFESTIGUNG Bogie fixation pin	00527002	002
24	LOKRADSATZ M.Z.O.N. RAL 7021 Loco wheelset with gear wheel w/o trac.tyre	53715900	010
25	RADS. M.ZAHNR. M. 1 NUT BR 103 Wheelset complete with gear wheel, 1 trac. tyre	53716000	011
26	HAFTREIFEN Traction tyre	00547002	001



733673 BR 139 Lokomotion				=	N
Pos. Nr. Pos.no.	Beschreibung Description	Art.-Nr. Art.no.	Preisgruppe Price bracket		
27	ZAHNRAD Z:20 SCHWARZ Gear wheel Z=20 black	00567101	003		
28	SCHNECKE D = 4MM L = 8MM Worm gear D=4mm, L=8mm	00567605	006		
29	KONTAKTBLECH-SATZ Contactor sheet	61780300	007		
30	KONTAKTBUJEGEL F.DREHGEST.LOKS Contact bush for bogie type locos	00657004	013		
31	MOTORPLATINE kpl. INCL. LICHTP. Motor PCB complete incl. light PCB	65719200	020		
32	SCHERENSTROMABNEHMER Double arm pantograph	67707800	020		
33	LAUTSPRECH.9x16 FOX M.KLEBEPAD Speaker 9x16 with adhesive pad	68701100	016		
34	LAUTSPRECHERAUFNAHME Loudspeaker reception	68701800	016		
35	SOUNDDECODER Sound-decoder	68733071	041		
36	SCHRAUBE M1,7x2,5 Screw M1,7x2,5	70900035	002		
37	PUFFER Buffer	00757021	003		
38	PUFFERBOHLE KPL. F:733603 Frontside framework, complete	75733603	011		
39	DRUCKFEDER Pressure spring	00767012	001		
40	ERSATZ SCHLEIFKOHLEN Carbon brushes set	6518	---		
41	STANDARD-STECKKUPPLUNG Clip-in coupling	9525	---		